

# TLM-702PD



## FEATURES

- Industry grade panel, with up to 50,000 hours panel life.
- Resolution: 800 × 480 pixels.
- LCD contrast ratio: 1000:1 LED backlight.
- HD/SD-SDI, HDMI, HD/SD-YUV & Composite Video input.
- Aspect: 16:9 & 4:3 with safe area indicator.
- Time code on screen display.
- Blue only function.
- HD/SD-SDI embedded audio input/output monitor
- Audio level indicator.
- Colour temperature: 9300, 7500, 6500, 5400 or user defined configuration.
- Built-in colour bar generator.
- Individual brightness, contrast, colour & tint (tint NTSC only) adjustment for each panel.
- NTSC/ PAL auto switching.
- Dual colour, self-powered tally system provided for each panel.
- Standard 19-Inch / 3U rack design.
- Unique tilt adjustment while mounted in rack.

## FEATURES

Safe area indicator 4:3 & 16:9



Support for time code



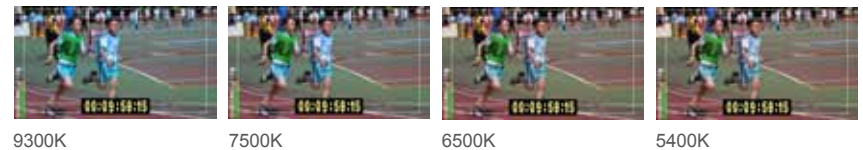
Audio monitor & audio level indicator



Blue only function



Colour temperature, standard plus user defined configuration.



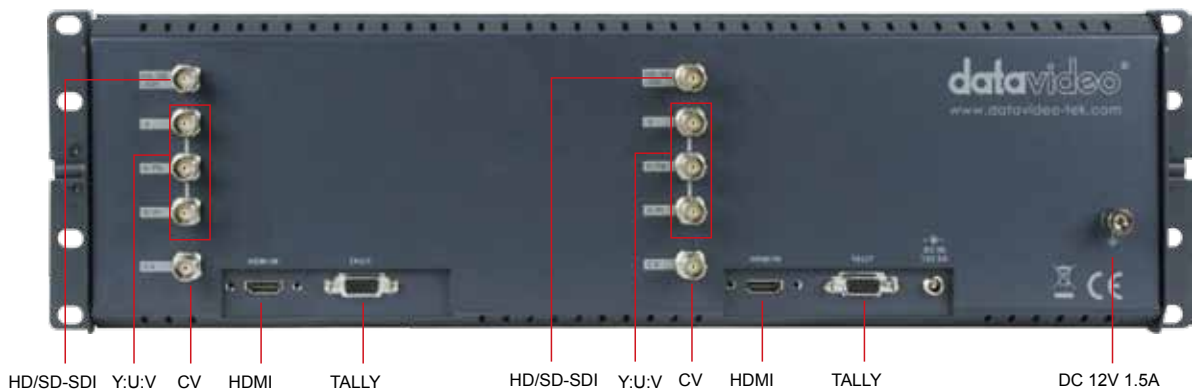
9300K

7500K

6500K

5400K

## REAR VIEW



HD/SD-SDI

Y:U:V

CV

HDMI

TALLY

HD/SD-SDI

Y:U:V

CV

HDMI

TALLY

DC 12V 1.5A